

ML-driven dialogues for coaching & DTx

AN ANNOUNCEMENT

ML-driven Dialogues for Coaching and DTx

Coach patients using natural, engaging dialogues dynamically generated by ML on patient data

Our approach

- A hackathon for ML engineers to get to know our data, devise problems around it and produce ML algorithms tackling them
- A write-athon for coaching dialogues

Our promise

- Offer the data to facilitate ML-driven dialogues for coaching and DTx
- Facilitate synergies, originally within each of the communities, and in the long-run across them

Hackathon: ML for analyzing RWD in Healthcare

Goal

- Understand offered RWD and the opportunities for extracting information from it
- Train ML algorithms for classification or regression of outcomes in RWD

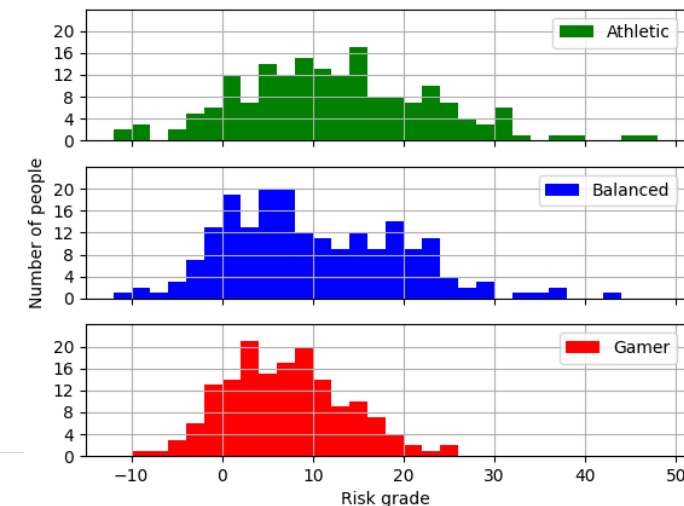
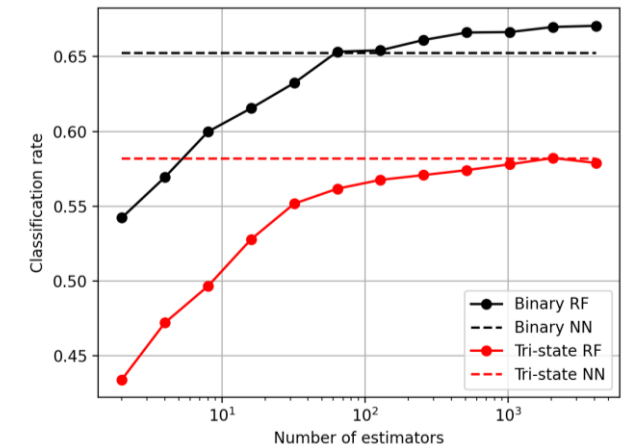
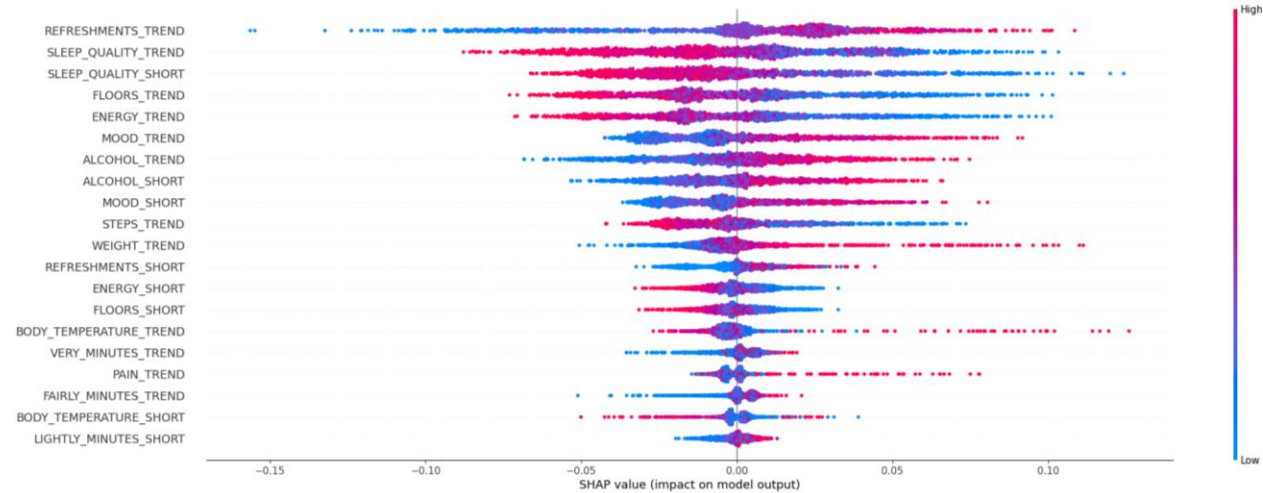
Available RWD

- Attributes: physical activity, heart, sleep, common symptoms, nutrition, mood and quality of life
- Synthetic: Hundreds of people with different behavioral traits simulated over years
- Actual (under consideration): datasets limited in duration (weeks or at best months) and people involved (a few tens)

Audience

- ML engineers
- Interested in healthcare data
- Individuals or groups from companies

Classifier on wellness short-term outlook



Write-athon: dialogues for coaching and DTx using WOOL



“WOOL is a simple, powerful dialogue framework for creating virtual agent conversations.” – www.woolplatform.eu

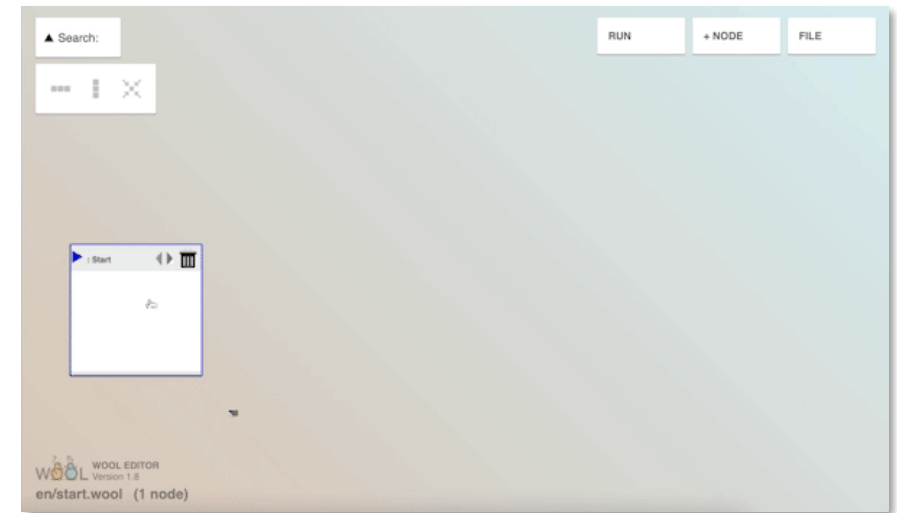
Three main components:

1. A dialogue **language** definition;
2. A user-friendly **editor** for creating dialogue scripts;
3. A set of **tools** to execute dialogues within your application of choice.

Goal: to write **engaging** and **personalized** coaching dialogue in WOOL based on user’s collected **real world data** and information extracted through the ML challenge...

Audience:

- Health / wellbeing experts
- Technicians with an interest in healthcare / coaching



Brought to you by...



Roessingh
Research and Development



**INNOVATION
SPRINT**

